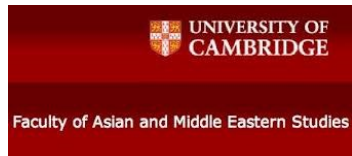




# How Can the International Community Effectively Engage North Korea?

This event was made possible with the following  
funders, sponsors and institutional partners



Centre for Research In the Arts, Social Sciences  
and Humanities

Alison Richard Building, 7 West Road, Cambridge, CB3 9DT

University of Cambridge

December 12th, 2015



## Dear Conference Participant,

Thank you for your participation in Engage Korea's 2015 conference held at the University of Cambridge. Continuing tensions and diplomatic stasis on the Korean Peninsula suggest the need for greater constructive discourse about how to effectively engage a country conceived of as isolated and difficult and on which comprehensive and empirical data is not often easily accessible. The conference seeks to address this need by convening scholars and practitioners knowledgeable on North Korea who encompass a variety of backgrounds. Many have either travelled or worked in North Korea. Open to the public, this conference aims to catalyze the generation of new ideas to bring peace to the Korean Peninsula and forge partnerships among attendees with either the same humanitarian goals or research interests.

The design of the conference allows interested laypersons and knowledgeable scholars and practitioners focused on North Korea to gain from the interdisciplinary presentation of material. The conference starts with three plenary sessions to provide participants with an understanding of interactions and engagements with and in North Korea in the fields of health, education and culture, and development within the Tumen region. Following these plenary sessions, participants may choose from a selection of small group student-led discussion sessions. These are a speciality of Engage Korea serving to introduce interesting work from emerging researchers/practitioners and an opportunity to discuss in greater detail issues arising from the plenary sessions. Debates and topics raised during the discussion sessions will then feed into a final plenary to enrich the knowledge and experience of the wider conference audience and participants. The day's event ends with a film screening of a documentary from Norwegian state broadcaster, NRK on the work of one of the conference participants.

We hope you enjoy the event, and take away much insight, pointers and directions useful in the context of your own work. Please let us know if you have any questions or comments.

**Very Best,**

**Engage Korea 2015 Conference Staff**

## Conference Itinerary

Saturday 12th December 2015

09:00	<b>Registration Begins</b>
09:30-09:40	<b>Opening Remarks</b>
09:40-11:00	<b>Plenary 1 (Health)</b>
11:00-11:20	<b>Break</b> <i>Tea and coffee served</i>
11:20-12:40	<b>Plenary 2 (Education/Culture)</b>
12:40-13:40	<b>Lunch</b>
13:40-15:00	<b>Plenary 3 (Tumen River Triangle)</b> <i>In partnership with the North Asian Borders project, University of Cambridge</i>
15:00-15:20	<b>Break</b> <i>Tea and coffee served</i>
15:20-16:10	<b>Student Discussion Groups 1-3</b>
16:10-16:20	<b>Break</b>
16:20-16:50	<b>Plenary 4 (Feedback Plenary)</b>
16:50-17:50	<b>Film Screening (Yes! We Love this Country)</b>
17:50-18:00	<b>Closing Remarks</b>

## Plenary 1 09:40 - 11:00 - Health

**Stina Bae** (moderator), PhD student, *Copenhagen Business School*

**Kee Park**, Chair, *Korean American Medical Association (KAMA) & World Korean Medical Organization Global Outreach Program*

Topic: **Doctors and the Engagement of North Korea**

**Sun-Hwa Lee**, *DULA International*

Topic: **Reflections on the North Korean Youth Para-Ensemble**

**Mike Cowin**, Research Analyst, Foreign and Commonwealth Office

Topic: **Disability and Engagement, the FCO experience**

## Plenary 2 11:20 - 12:40 - Education/Culture

**Sarah Son** (moderator), Postdoctoral Research Associate, *School of Oriental and African Studies, University of London*

**Colin McCulloch**, Professor of Management and Economics, *Pyongyang University of Science and Technology*

Topic: **'Soft Power' – or 'A Soft Touch': the Case of P.U.S.T.**

**Jana Hajzlerová**, PhD Student, *Charles University Prague and Chair/Director of Czech-Korean Society*

Topic: **Friends Lost and Found: North Korea Policies in the Czech (Slovak) Republic**

**Andrea Rose**, Former Director of Visual Arts and Strategic Programmes, *British Council*

Topic: **Above the Line: Developing a Cultural Relationship with the DPRK**

**Morten Traavik**, Norwegian Director and Artist, *Traavik.info*

Topic: **East of the Hype and West of the Propaganda**

## Plenary 3 13:40 - 15:00 - Tumen River Triangle: Development and Local Communities

In partnership with the North Asian Borders project, *University of Cambridge*

**Hyun-Gwi Park** (moderator), Research Associate, *Faculty of Asian and Middle Eastern Studies, University of Cambridge*

**June Hee Kwon**, Assistant Professor/Faculty Fellow, *East Asian Studies, New York University*

Topic: **The Marker of Borderland: Korean Chinese Anxieties and Memories about the Tumen River in Yanbian, China**

**Anastasia Konyakhina**, Research Associate, *Department of Social and Political Studies, Institute of History, Archaeology and Ethnography of Peoples of the Far East at the Russian Academy of Sciences*

Topic: **The Development of Khasanskii Raion: Potential, Problems and Perspectives**

**Robert Winstanley-Chesters**, Post-Doctoral Fellow, *University of Cambridge (Beyond the Korean War)*

Topic: **Connecting and Co-Producing Nature and Nation in North Korea and the Tumen Triangle**

## Student-Led Discussion Groups 15:20 - 16:10

*Please choose ONE discussion group*

### Group One

**Mark Buttweiler** (Leader), Masters Student, *University of California, San Diego*

Topic: **Agriculture Productivity and Market Prices**

**Selcuk Koseoglu**, Bachelor Student, *Koç University, Istanbul and*

*San Francisco State University*

Topic: **A Humanitarian Approach to Greater North Korean Integration**

### Group Two

**Sung Kim** (Leader), Masters Student, *University of California, San Diego*

Topic: **North Korea and its negotiating edge during the first nuclear crisis**

**Justin Kim-Hummel**, Masters Student, *SAIS, Johns Hopkins University, Washington DC*

Topic: **Lets Make a Deal**

### Group Three

**Jan Blinka** (Leader), PhD Student, *Masaryk University, Czech Republic*

Topic: **Security Relations between North Korea, South Korea and United States after the end of the Cold War: Reciprocity or Bullying?**

**Jongmin Park**, Masters Student, *Royal College of Art, London*

Topic: **Can architecture be neutral in a conflict zone?**

## Plenary 4 16:20-16:50 Discussion Group Feedback

**Théo Clément** (moderator), PhD Student, *Sciences Po Lyon, France*

**Mark Buttweiler**

**Sung Kim**

**Jan Blinka**

## Film Screening 16:50–17:50

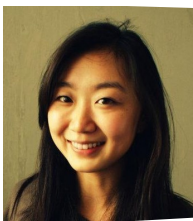
**Yes! We Love this Country: An Art Journey to North Korea**

Dir: Vivi Stenburg, NRK, 2012



## Kee Park

Mr. Park is the current Chair of the Global Outreach Committee of the Korean American Medical Association as well as the World Korean Medical Organization. He is the director of the KAMA North Korea Doctor to Doctor Initiative and advisor to the Korean American Medical Student Association North Korea Exchange Program. Since 2007, Dr. Park has developed a close relationship with the North Korean neurosurgeons and facilitated relationships between North Korean doctors with their counterparts around the world including US, UK, Norway, Pakistan, Sweden and Australia.



## Sun-Hwa Lee

Born in South Korea, Sun-Hwa moved to England with her family as a child in 1999. She studied Philosophy and PGCE at University of London and began working with DULA International in 2012. In February 2015, when DULA hosted the North Korean Para-Ensemble group, Sun-Hwa was a core member of the DULA team representing and caring for the disabled North Korean youth and acting coordinator during their visit.



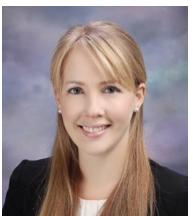
## Mike Cowin

Mike Cowin, former deputy head of mission at the British Embassy in Pyongyang, North Korea, Korean Studies Program at the Shorenstein Asia-Pacific Research Center as the 2014–15 Pantech Fellow. Cowin has spent twenty years covering Korean issues for the British Government, Cowin, a specialist on Korea and Japan, has been a member of the Research Cadre of the Foreign & Commonwealth Office (FCO) of the United Kingdom since 1988. He has also served in the British embassies in Tokyo from 1992 to 1997, in Seoul from 2003 to 2007 and in Pyongyang, as deputy head of mission, from March 2012.



## Stina Jinsun Bae

Stina Jinsun Bae is a PhD candidate at Copenhagen Business School, Denmark. She is interested in the role of foreign investment in social development and people empowerment in the context of DPRK. Prior to her PhD study, she conducted academic research on Sweden's engagement with DPRK and completed her master in Asian Studies at Lund University, Sweden. In South Korea she worked for a NGO that raised awareness and conducted trainings on rights-based approach (RBA) for interested young people and practitioners at international development NGOs.



## Sarah Son

Sarah Son is a Postdoctoral Research Associate at the School of Oriental and African Studies, University of London. Since obtaining her PhD in 2014 she has been a Research Fellow at Korea University's Asiatic Research Institute and the Academy of Korean Studies in Seoul. Sarah has been working with Engage Korea since its inception, and her research interests include identity, reconciliation, nationalism, security, migration, transitional justice and human rights in East Asia.



## Jana Hajzlerová

Jana Hajzlerová is the Chair and Executive Director of the Czech-Korean Society, a Czech NGO established in 1990 to support institutional and individual ties between the post-socialist Czech Republic and both Koreas. Previously, Jana worked on cultural projects for the Embassy of the ROK in Prague where she is currently working towards her Ph.D. at the Institute of East Asian Studies. Her doctoral research is focused on ideological framing in North Korean media.



## Colin McCulloch

Colin McCulloch graduated from Cambridge and had a career as a consultant in mechanical engineering, product and software marketing and business strategy, before stepping into a new career related to East Asia. After Chinese and later Korean studies at Sheffield University, he has been living in Pyongyang since October 2010, when he arrived there as one of the first team of foreign staff at PUST. He now teaches both English and business courses.



## Morten Traavik

Norwegian multiartist Morten Traavik is one of very few foreigners who has experienced North Korea from the inside over a longer period of time. Through years of devising and directing a series of ground breaking and highly controversial performances and art projects in close collaboration with North Korean artists and cultural officials, he has gained not only friends and colleagues but even a rare level of trust, access and not least understanding of what makes up this enigmatic nation. In August this year he made world headlines by organising and directing the first avant-garde rock concert ever in North Korea, in the form of ex-Yugoslavian art rockers Laibach.



## Andrea Rose

Andrea Rose was Director of Visual Arts and Strategic Programmes at the British Council from 1994-2014. She was responsible for global programmes in the Visual Arts, but had a special interest in Russia, China, Iran, India, the Middle East and the Korean Peninsula. She was responsible for developing the first cultural agreement between the UK and DPRK in 2014. She was formerly the UK Representative to the Cultural Commission of UNESCO. Andrea is currently a Governor of University of the Arts London, advisor to the National Gallery and Trustee of the Royal Drawing School among others.



## Hyun -Gwi Park

Hyun-Gwi Park is a Research Fellow, Clare Hall, University of Cambridge. She has been working on the topics of post-socialism, migration, diaspora politics, kinship and domestic economy with focus on Koreans in the Russian Far East. She is currently interested in inter-Korean connections across Sino-Russian border, legacy of post-socialism, geopolitical construction of ecology in Northeast Asia, and development projects in the Northeast Asian borderlands. Her publication includes 'Migration Regime among Koreans in the Russian Far East' in Inner Asia (2003)



### Anastasia Konyakhina

Anastasia is an associate researcher at the Institute of History, Archaeology and Ethnography of the Peoples of the Far East, Far-Eastern Branch of the Russian Academy of Science (Vladivostok). Anastasia is working on a dissertation titled "Social and political life in the Far East of Russia in the second half of the 1980s - early 1990s." Her research interests are focused on issues on the theory and practice of civic participation, relations between the authorities and the local society, behavior and adaptation strategies of the residents in the late Soviet and post-Soviet period.



### Mark Buttweiler

Mark Buttweiler is a Masters student at the University of California, San Diego, where he studies economic development with a focus on the Korean peninsula. From 2014 to 2015 he was a Boren Fellow in Seoul, South Korea, where his research focused on South Korea's rural development program of the 1970s (Saemaul Undong) and its contemporary use as official development assistance programs in SE Asia. Mark also runs a popular blog on LGBT news and culture in South Korea. His current research aims to capture novel methods to measure North Korean economic activity through remote sensing.



### June Hee Kwon

June Hee Kwon is Assistant Professor/Faculty Fellow in the Department of East Asian Studies at New York University. Her research and teaching focus on transnational migration and human rights, kinship and ethnicity, and affect and economy. Her area of expertise spans contemporary Korea (North and South) and China, and includes postcolonial and post-Cold War East Asian inter-connections. Her current book project, *Rhythms of a Borderland: The Korean Chinese Transnational Commute Between China and Korea*, examines the remittance-driven everyday lives of Korean Chinese who move back and forth between Korea and the Korean Chinese Autonomous Prefecture of Yanbian, China. Her article, "The Work of Waiting: Love and Money in Korean Chinese Transnational Migration," appears in *Cultural Anthropology* 30:3 (August 2015).



### Selcuk Koseoglu

Selcuk Mert Koseoglu currently attends Koç University, in Istanbul, majoring in International Relations with a double major in Sociology. He is working as a mentor for incoming exchange students in order to assist them throughout their program and has been a translator for the Ephesus Archaeological Museum and the Municipality of Selcuk, Izmir. He will receive his Bachelor's degree in 2018 after completing two consecutive exchange programs at San Francisco State University and Fudan University, respectively. As a student of International Relations with deep interest in contemporary authoritarian and totalitarian regimes, he plans to continue his education specializing in East Asian Studies, maintaining focus on the Democratic People's Republic of Korea and its domestic and foreign affairs.



### Robert Winstanley-Chesters

Robert Winstanley-Chesters is a Post-Doctoral Fellow of Cambridge University (Beyond the Korean War) and Visiting Research Fellow at the University of Leeds (School of Geography) and Director of Research at SinoNK.com. Robert obtained his doctorate from the University of Leeds with the Thesis "*Ideology and the Production of Landscape in the Democratic People's Republic of Korea*", published as "*Environment, Politics and Ideology in North Korea: Landscape as Political Project*" in 2014. Robert's second monograph "*New Goddesses of Mt Paektu: Gender, Violence, Myth and Transformation in Korean Landscapes*" has also been accepted for publication in 2016 by Rowman and Littlefield. Robert is currently researching Pyongyang's leisure landscapes, historical geographies of Korean forestry, colonial mineralogical inheritances on the peninsula and animal/creaturely Geographies of North Korea.



### Sung Kim

Sung Kim completed her undergraduate education at Ewha Womans University majoring in International Studies. Later Sung attended Columbia University to do her master's on regionalism focusing on East Asia with a thesis on the accumulating rationale of North Korean nuclear weapons. Sung then worked as an intern at the Woodrow Wilson Center NKIDP researching Kim Il Sung, his role in the Korean War and his relationship to Mao Zedong. Returning to South Korea, Sung attended the University of North Korean Studies engaged in research focused on North Korea's negotiations during the first nuclear crisis and the rhetoric and propaganda of this period as exemplified by the output of Rodong Sinmun.



### Justin Kim Hummel

Justin Kim-Hummel attends The Johns Hopkins School of Advanced International Studies in Washington, D.C, pursuing a Master's degree in Korea Studies and International Finance. His current research is on pursuing a different route to peace between the US and North Korea.





### Jan Blinka

Jan Blinka is PhD. candidate in International Relations at Masaryk University, Czech Republic. He is interested in development and dynamics of regional conflicts, specifically those in East Asia and Caucasus region. He focuses on security relations between major actors on Korean peninsula, and on political development in North Korea. Jan combines his research with practical experiences from Czech diplomacy and NGO sector, aiming at comprehensive and multisectoral approach. He has worked for the humanitarian NGO "People in Need" and underwent study visits at prestigious academic institutions in France and South Korea.



### Théo Clément

Theo is a French Ph.D candidate in Political Science at the Institute of East Asian Studies (Lyon, France) and in East Asian Economy and Society at the University of Vienna. He is also a visiting lecturer at Pyongyang University of Science and Technology. His research focuses on Sino-DPRK bilateral economic cooperation, and especially on Special Economic Zones and other recent economic policies of North Korea. The ultimate purpose of his research is to try to better understand the dynamics of the Beijing-Pyongyang relationship using a geoeconomic perspective. He is currently based in China and keeps himself busy with doing fieldwork.



### Jongmin Park

Jongmin Park has a BE. in Architecture from Catholic University of Daegu, South Korea (2009), an MA in Architecture (2012) from Hongik university. He began his practical training with mp\_Art Architects working on the National Contemporary Art museum in Seoul (2013). Jongmin also taught with Advance Computer Architecture Design at the Catholic University of Daegu in 2012. He came to London in 2013 and has recently graduated his RIBA Part 2 and MA in Architecture (2015) at the Royal College of Art. His final work about the role of social architecture in a conflict zone was nominated for the RIBA President's Medal 2015. After graduation, He will work at Foster + Partners in London.

Engage Korea 2015 would not be possible without our sponsors, funders, supporters and institutional partners. Engage Korea 2015 is hosted by Faculty of Asian and Middle Eastern Studies, University of Cambridge with generous funding of the Academy of Korean Studies (AKS-2015-C11), and the British Korean Society. Conference organisers are also grateful for institutional support provided by the North Asian Border Project (funded by ESRC) and Beyond Korean War Project, Cambridge University.



**Engage Korea is a global student network and humanitarian educational initiative on DPRK.** We aim to provide a platform for constructive discussions on better modes of engagement with DPRK and to link interested young people with information about relevant research and service opportunities.

Beginning with its first conference in May, 2013 at Oxford University, UK, Engage Korea has evolved into an organisation that helps student communities across borders to organise DPRK-related events locally.

Visit us at [www.engagekorea.org](http://www.engagekorea.org)

### Tumen River Triangle: Development and Local Communities

The Tumen River Triangle is well known for its development project initiated in the early 1990s, thanks to its geo-political, geo-economic and geo-strategic potential. Although the project's geographical importance is very much highlighted focusing on this bordered region, shared between three countries, available research and reports are largely conducted from bird eye's view. The Tumen River Triangle project and panel tries to address rectify this issue, focusing on local communities and their relationships with the development in/of this borderland. In contrast with the area's great potential and high geographical profile, it is also the least developed and marginalised in each riparian country.

Where does this discrepancy come from then? How do local communities respond to the development projects? What is the historical background of local communities in this borderland? The panel and project aims to address these questions and other topics related to and sited in the Tumen River Triangle.